



ABB59G ABB69G ABB90G

Back Bar Refrigeration



Features:

- Stainless steel exterior
- Stainless steel interior
- Electronic thermostat with digital LED display
- Temperature range 32F to 50F
- Glass doors with locks with keys
- Automatic defrost system
- LED lighting
- High density CFC-free polyurethane foam
- Forced air refrigeration system maintains temperature
- Comes standard with 4" casters, 2 with brake



ABB59G, ABB69G, ABB90G | Bar Back Refrigeration

ABB59G	
Doors	2
Shelves	4
Amps	2.3
HP	1/6
Voltage	115/60/1
Size	57-3/4" X 28-1/8" X 41-3/4"
Shipping Weight	284

ABB69G	
Doors	2
Shelves	4
Amps	2.3
HP	1/6
Voltage	115/60/1
Size	68" X 28-1/8" X 41-3/4"
Shipping Weight	317

ABB90G	
Doors	3
Shelves	6
Amps	2.8
HP	1/5
Voltage	115/60/1
Size	90" X 28-1/8" X 41-3/4"
Shipping Weight	392

In the pursuit of a better product, durability and performance, Aurora reserves the right to change specifications, materials and design without further notice.

Bar Back Refrigeration | ABB59G, ABB69G, ABB90G

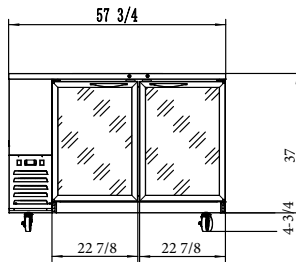
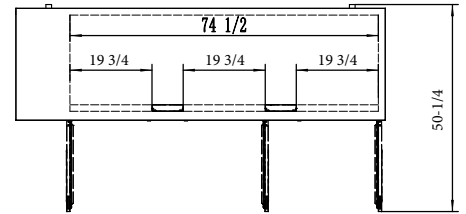
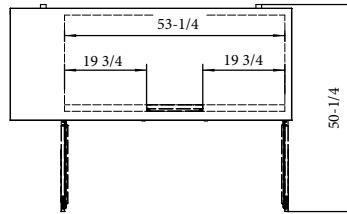
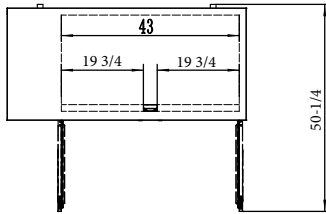


ABB59G

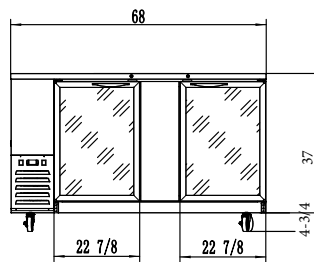


ABB69G

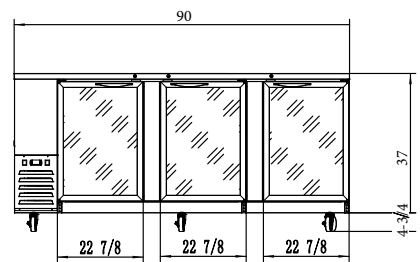
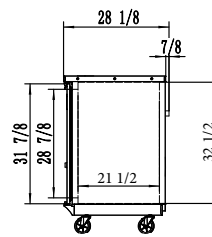


ABB90G



Side View

